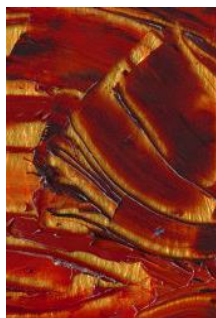


# CHURCHILL PARK UNITED CHURCH ANNOUNCEMENTS

## May 26, 2023



### Sunday Worship, May 28th – Spirit-Blessed

9:15am – Choir Practice

10:00am – Worship

11:30am – Visiting and Refreshments

11:30am – Future Directions Team Meeting (*Dawn's Office*)

**Worship livestream link (You tube) will be sent separately.**

### In the Calendar:

Friday, May 26th – 5:30pm. Messy Church at Augustine United

Wednesday, May 31st – Cindy in the Office (9:00am-Noon)  
1:00pm. Women's Spirituality Group (*Lounge*)

Thursday, June 1st – Cindy in the Office (9:00am-Noon)

Thursday, June 1st - Saturday, June 3rd – Dawn at Regional Meeting, Meadowood United

Sunday, June 4th  10:00am. Worship  
11:00am. Pride March. Beginning at Memorial Blvd.

Monday, June 5th – June 19th – Dawn on Study Leave

Wednesday, June 7th – Cindy in the Office (9:00am-Noon)

Thursday, June 8th – Cindy in the Office (9:00am-Noon)  
1:00pm. **NO** CPUC Zoom Visit

Wednesday, June 21st – 5:00pm – Leadership Team Meeting (*Hybrid*)

Saturday, June 24th – 10:00am to 4:00pm – Urban Retreats Garden Tour (see below for details)

### Messy Church: Loaves and Fishes

**When:** May 26th. Beginning at 5:30pm with supper

**Where:** Augustine United Church, Osborne Village, lots of free parking nearby.

**Explore:** Using all your senses.



**NOTICE, Knitters: The Knitting Group is on hiatus until October.**

**Welcome  
To New Renters at Churchill Park United**

We are delighted to welcome several new (temporary) renters to the 525 Beresford spaces.



Aki Energy: Meetings in the Lounge

This indigenous Social Enterprise, working in partnership with various First Nations, links First Nations to the green economy through community-centered sustainable energy development.



A Pickle by Deborah Yarchun, Winnipeg Jewish Theatre

When the Minnesota State Fair rejects Doris Rubenstein's traditional kosher dill pickles for the second year in a row, Doris confronts the judges. It becomes clear that the traditional Jewish brining process is not understood. Then, Doris digs deeper. "A Pickle" is a darkly comedic look at prejudice and the power of Chutzpah (outrageous gumption). Based on true events.

Rehearsing, daily, in the CPUC basement.

U-Turn Parkinson's. A Wellness Centre whose mission is to empower people living with Parkinson's in their pursuit of wellness. U-Turn will rent the gym this summer while their regular meeting space is unavailable.



Prelude Music

Our sanctuary will host the Year-End Recital for the second year.

**Our renters find us largely through *word of mouth*. Please tell people about our great rental spaces and be part of our "Ministry of Space." Thanks to Cindy, Wayne and John for all they do to make CPUC a great place to meet.**

**Urban Retreats Garden Tour**

Saturday, June 24, 10:00–4:00, rain or shine.  
Self-guided tour of beautiful South St. Vital gardens.  
Supporting 1JustCity's West End Drop-in. Tickets \$20.

Tea, Craft and Plant Sale – 10:30–2:00  
United Church in Meadowood, 1111 Dakota Street.  
Tickets: \$5. At the door.

More info at: <http://1justcity.ca/garden-tour>



**CHURCHILL PARK UNITED CHURCH DIRECTORY**

525 Beresford Ave. Winnipeg, MB R3L 1J4 Telephone 452-8561

Office: OPEN Wed and Thurs 9am to 12pm

Congregational website: [www.churchillparkunited.ca](http://www.churchillparkunited.ca)

Minister – Rev. Dawn Rolke (204-272-3299) Email: [minister\(at\)churchillparkunited.ca](mailto:minister(at)churchillparkunited.ca)

Facebook: [www.facebook.com/churchillparkunited](http://www.facebook.com/churchillparkunited)

Office Administrator – Cindy Kraus Email: [office\(at\)churchillparkunited.ca](mailto:office(at)churchillparkunited.ca)

Music Director – Arlene Baschak Email: [arlene.baschak\(at\)gmail.com](mailto:arlene.baschak(at)gmail.com)

Property Manager: Wayne Arklie (cell: 431-335-4495)